

# Bartlett Church News

## Bartlett Union Congregational Church

Web Site: [www.Bartlettchurch.net](http://www.Bartlettchurch.net)

Volume 6 Number 6

Bartlett, New Hampshire

June 01, 2010

### A Note from your Pastor

Susan "Andy" Jepson

Dear Friends,

What a good month for our church May has been! On the 16<sup>th</sup>, confirmands Robyn Coffield, Gigi Miller and Brian Wanek were received into membership following more than a year of study, prayer and discussion about the meaning and responsibilities of our faith. On the 23<sup>rd</sup>, we received five new adult members by reaffirmation of faith, though not all could be there. Miriam Habert-Jaques, and Nick Jaques, Pauline and Steve Wright and Rochelle Mulkern have been waiting for some time to be official. They have wildly different schedules, so our preparation was by phone, conversation and email. So it is with worship. The Habert-Jaques family will be in worship when they can, and we'll welcome Nick and Miriam personally AND baptize Samantha.

Receiving new members is always cause for celebration. The occasion should also remind us of our ongoing responsibilities. After all, we make commitments when we become members.

- We agree to worship regularly and frequently, as we are able.
- We agree to take part in church ministries and activities, as we are able.
- We agree to support the church financially, as we are able.

In all cases, we are asked to fulfill our responsibilities as we are able. No one is asked to attend, work or give beyond his or her capacity. Everyone is asked to contribute time, talents and financial resources to her or his capacity.

The latest treasurer's report shows that income is falling behind expenses on a monthly basis. We began the year with something of a surplus because of single donations at the beginning of the year from people do not pledge. And we may receive more one-time donations as the year goes on, but planning doesn't work well without information.

Pledging is important.

- It allows the church to predict and plan the best use of resources.
- It keeps the commitment we made when we became members. (continued)

## Happy Birthday



June 03 Celia Dustin  
June 11 Mary Miller  
June 13 Dan Fitzpatrick  
June 26 Marion A. Owen

## Happy Anniversary



June 25 Jim and Mary Miller  
June 29 Don and Phyllis Linger  
June 30 Mike and Doris Kirk

## Father's Day

Father's Day is celebrated on Sunday, June 20<sup>th</sup>. Father's Day was recognized by a joint resolution of Congress in 1956. President Richard Nixon established a permanent National Observance of Father's Day to be held the 3<sup>rd</sup> Sunday in June.

## Flag Day



Monday, June 14<sup>th</sup> is **Flag Day**.  
Be sure to fly your flags

Flag Day commemorates the adoption of the flag of the United States of America which happened by a resolution of the 2<sup>nd</sup> Continental Congress in 1777.

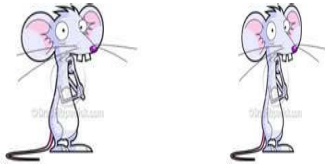
President Woodrow Wilson issued a Proclamation that officially established June 14<sup>th</sup> as Flag Day in August 1949. National Flag Day was established by an Act of Congress

## School vacation



School will soon be out for the summer vacation. Children will be riding bikes and skate boards in the village, so please watch out when you are driving thru town.

# Church Mice



The ladies of the Church Mice met recently at the Church to make plans for the Memorial Day Luncheon. Attending were: Greta George, Nancy Jacobs, Evelyn Bailey and Judith Botsford.

A sandwich luncheon will be served following the Memorial Day Parade down Main Street to the park for services.

Greta reported that the Historical Society will be holding a dance in the Park the end of July and asked if the Church Mice would work on it as well. It was decided amongst the ladies that We will provide the desserts and Sundaes which will be done from our Church Booth.

The Strawberry Shortcake booth will again be held in the park on July 4<sup>th</sup> at the big celebration. Workers are needed for strawberry picking and other preparations.

The Church Mice will once again bring their Booth to the Sandwich Fair and sell their famous "Veggie Pocket" sandwiches and strawberry shortcake. Please put the date of October 8-11<sup>th</sup> on your calendar and plan to help us man the booth.

# Christian Education

Judi Coffield

Hello from the Christian Ed committee! It has been an exciting year for the youth group. As many of you know, the confirmation students are now official! Andy did a beautiful job Sunday the 16th, confirming Gigi Miller, Brian Wanek & Robyn Coffield. We are all very proud that they are growing up in the Christian faith.

The younger group were congratulated with flowers and we had an awesome picnic after. A huge thank you goes out to Jean Garland. The picnic spot on her property, was gorgeous and her idea too! **Thank you, Jean!** We appreciate all the people that came and all the food that you brought. That's one thing you can count on in this church, there is never a lack of goodies. We will take a summer break from youth group and Sunday school but Mary, Nancy & I have some ideas for next year. Keep us in your prayers!

Andy's SOS group has been meeting and I like to mention that because it is Christian education after all.

Thanks again everyone for your continued support with the youth!

*Judi Coffield*

# A report from our treasurer

Bert George

Financial Report - April 2010

BARTLETT CONGREGATIONAL CHURCH

monthly Operating Statement

	Apr-10 Actual	Total Year to Date
<b><u>INCOME</u></b>		
Pledges	\$1,365.00	\$10,656.00
Other Income	<u>\$576.10</u>	<u>\$3,555.78</u>
<b><u>TOTAL INCOME</u></b>	<b>\$1,941.10</b>	<b>\$14,211.78</b>
<b><u>EXPENSES</u></b>		
Pastoral Staff	\$1,600	\$7,720.00
Administrative	\$1,034.00	\$2,786.43
Property	\$1,744.10	\$7,162.34
Missions	<u>0</u>	<u>\$0.00</u>
Dept/comm	<u>\$971.42</u>	<u>\$971.42</u>
<b><u>TOTAL EXPENSES</u></b>	<b>\$5,349.52</b>	<b>\$18,640.19</b>
<b><u>EXCESS INCOME\LOSS</u></b>	<b>(\$3,408.42)</b>	<b>(\$4,428.41)</b>
<b>Avg monthly income to date</b>		<b>\$3,552.94</b>
<b>Avg Monthly Income Needed</b>		<b>\$4,700.00</b>

## Pastor's Message Continued

- It says that we give our faith the same thought as the car we drive or the need to paint the house. It means that we're willing to make as much commitment to God as we make to credit card payments.

The young people who were just confirmed, and any church members, new or not, who have not pledged to the work of God through the church will be receiving pledge cards soon. We hope that everyone who has not yet told us what we can expect over the course of the year will do so now.

Consider it a celebration of your own faith as well as that of our new members.

Love, Andy

## June 2010 Lectionary Readings and Sermon Titles

June 6, 2010: The Second Sunday  
after Pentecost

Reading: Galatians 1:11-24

Sermon: Saving Grace

June 13: The Third Sunday after  
Pentecost

Reading: Galatians 2:15-21

Sermon: Faith, Grace, Love and the Law

June 20: The Fourth Sunday after  
Pentecost, Father's Day

Reading: Galatians 3:23-29

Sermon: There Is No Longer . . .

June 27: The Fifth Sunday after  
Pentecost

Reading: Luke 9:51-62

Sermon: The Costs of Discipleship

Please sign up to read Scripture  
or lead the opening of worship.

The sign-up sheet is on the  
refreshment table

the *First* Sunday of every month is  
*Communion* Sunday AND *Worship*  
*Downstairs* AND a good time to  
bring *Food Pantry* items.

## Special BUCC Meeting

**A special Bartlett Church  
Meeting will be held Sunday, June  
13, 2010 following worship service.**

The purpose of this meeting is to  
consider a request from the Board of  
Trustees authorizing the expenditure  
of an amount not to exceed \$100,000  
to provide handicapped accessibility to  
the sanctuary level of the church and  
needed renovations to the heating  
system.

## Monthly Meeting Schedule

*With the exception of Search and Pastor-Parish Relations Committee meetings, all meetings are open. You may or may not have the privilege of speaking, as decided by the group or chair. If you have business to bring to a board or committee, please contact the chair, as listed below, to be put on the meeting agenda.*

**Deacons:** First Sunday

Contact Lee Coffield - 367-8696

**Council:** Second Sunday

Contact Rob Owen - 986-0235

**Trustees:** Third Sunday

Contact Bert George - 374-2328

**Search:** As needed

Contact Judi Coffield - 447-4427

**Meetings are usually in the classroom, after worship and coffee hour**

## Notes from draft minutes of the Board of Trustees Meeting, April 18, 2010

Present: Bert George (Chair and Treasurer), Carroll Hayes, Ben Howard, Andy Jepson (Interim Pastor), Steve Wright – guest

Stained Glass Window above Altar: A piece of Lexan will be installed to protect the stained glass window above the altar. The wood around it had rotted and it was in danger of falling. The area has been cleaned and stabilized and the Lexan will protect it permanently.

Painting: Money to cover the cost of painting the west side of the church has been donated. In addition, rotted areas will be repaired/replaced, painting on the north and west sides will be done and appropriate repairs or modifications will be made to prevent further damage.

Parsonage: Painting is being done inside and out as needed, the chimney will be lined and some needed repair on the furnace was done.

Financial Report: [The financial report for April is elsewhere in this newsletter.]

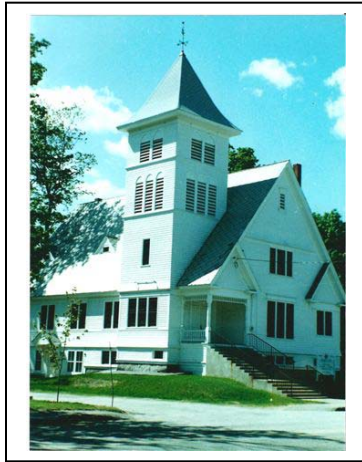
- Bert reports that we are running behind the average amount needed per month to support the operating budget. This is largely due to property costs, and there will be more such costs coming in the near future. There is a CD for \$2800 maturing soon, and Bert proposes closing it and putting the money into the operating budget for maintenance.
- As of the end of March, the Hunter Fund was worth \$190,683. It's still gaining but not yet back to its worth at inception.
- The Gagnon Fund is worth \$196,565 as of the end of March, more than its inception in June of 2008.

Bert is seeking advice about how the funds are and should be invested to strike the best balance between economic recovery gains and a potentially-declining dollar value in the future.

Handicapped Access/Lift: The issue of making the church accessible to more people has been revisited, with hope of finding a way to do the most important and affordable part of the work now and saving part of the work for another time, with some hopeful results. Carroll Hayes and Bert George will continue researching alternatives to the plans and information currently in hand from previous architect

# Special Bartlett Church Meeting

## Sunday, June 3, 2010



---

**Bartlett Union Congregational Church**  
**P. O. Box 112**  
**Bartlett, N.H. 03812**